



# The Village News

December 2024

## Inside The Village News:

- 1 – Parish Council Meetings
- 2 – A Festive Message
- 3 – Your Parish Councillors
- 4 – Parish Council Structure
- 5 – Parish Council Staff
- 6 – District & County Councillors
- 7 – District Councillor Surgeries
- 8 – Church Road Drainage Works
- 8 – From the Office of Jess Asato, MP
- 9 – Friends who Dance Group
- 10 – Kessingland Women's Institute
- 11 – Kessingland United Working Men's Club
- 12 – Kessingland Community Climate Action Group
- 13 – Kessingland CofE Primary Academy
- 15 – Kessingland Library
- 16 – Crossword Corner
- 17 – Help & Support in the Community
- 19 – Community Noticeboards
- 27 – Employment and Volunteering
- 30 – Community Recycling
- 31 – Useful Contact Numbers
- 32 – Crossword Solution



## Parish Council Meetings December 2024

### Full Council:

- Tuesday 10<sup>th</sup> at 7:00pm

### Finance & Governance:

- Wednesday 4<sup>th</sup> at 10:30am

### Planning & Highways:

- Wednesday 11<sup>th</sup> at 10:00am

### Personnel:

- No meeting scheduled.

### Leisure & Community Engagement:

- No meeting scheduled


The dates & minutes of all the committee meetings are listed on the parish council website: [www.kessinglandparishcouncil.co.uk](http://www.kessinglandparishcouncil.co.uk). The public & press are all legally entitled to attend such meetings and submit any questions relevant to the agenda.

To receive The Village News by Email, sign up here:  
<http://eepurl.com/hHHSZv>



Join us on Facebook  
Friends of Kessingland Parish Council

## A Festive Message from Kessingland Parish Council



The season of goodwill is upon us, and as we prepare to celebrate this special time in our calendar, on behalf of councillors, the acting parish clerk and staff of Kessingland Parish Council, I would like to wish each and every one of you a very Merry Christmas.

There is no denying that this year has been a challenging and difficult one. The Corona virus pandemic had severely restricted and changed our everyday lives and brought misery to many within our community. However, our community has come together with neighbours supporting each other and businesses stepping up, adapting their businesses and providing services to the community to help us re-adjust and move forward.

This sense of community spirit underlines what a truly special place we live in. A village I am proud to represent and call home. No matter what challenges our community faces, people do come together to overcome adversity. It is my strong belief that we have come through this difficult period stronger and closer than ever before.

The festive period is time for families and friends to come together, for sharing special moments and creating memories. Some residents will face a heightened period of loneliness with many unable to see families and friends. It is at this special time of year that we must support our neighbours, checking on vulnerable residents and spreading some much-needed festive cheer to those who may not otherwise receive it.

I would like to take this opportunity to pay tribute to all carers and Key Workers, whose unwavering dedication to providing the highest service to our community throughout the past year, is truly appreciated. A village such as ours depends heavily on the many talents and time selflessly shared by these remarkable individuals and groups.

On behalf of Councillors and staff of Kessingland parish Council, I wish you all a relaxing Christmas and trust 2025 will be peaceful and everything you wish it to be.

Councillor "Sid" James  
Chair

December 2024

## Your Parish Councillors



Stephen (Sid) James  
Chair of Council

01502 740521

[sjames@kessinglandparishcouncil.org.uk](mailto:sjames@kessinglandparishcouncil.org.uk)



Caroline Carter  
Vice-Chair of Council

07811 753930

[ccarter@kessinglandparishcouncil.org.uk](mailto:ccarter@kessinglandparishcouncil.org.uk)



Christine Cook  
Councillor

07592 555345

[ccook@kessinglandparishcouncil.org.uk](mailto:ccook@kessinglandparishcouncil.org.uk)



Alan Green  
Councillor

07789 644645

[agreen@kessinglandparishcouncil.org.uk](mailto:agreen@kessinglandparishcouncil.org.uk)



Julie McLean  
Councillor

07539 696904

[jmclean@kessinglandparishcouncil.org.uk](mailto:jmclean@kessinglandparishcouncil.org.uk)



Ian Graham  
Councillor

07985 462200

[igraham@kessinglandparishcouncil.org.uk](mailto:igraham@kessinglandparishcouncil.org.uk)



Bob Saunders  
Councillor

07901 530770

[bsaunders@kessinglandparishcouncil.org.uk](mailto:bsaunders@kessinglandparishcouncil.org.uk)



Neil Glendinning  
Councillor

07801 681136

[nglendinning@kessinglandparishcouncil.org.uk](mailto:nglendinning@kessinglandparishcouncil.org.uk)



Lynda Hood  
Councillor

07954 412031

[lhood@kessinglandparishcouncil.org.uk](mailto:lhood@kessinglandparishcouncil.org.uk)



David Boyle  
Councillor

07707 201300

[dboyle@kessinglandparishcouncil.org.uk](mailto:dboyle@kessinglandparishcouncil.org.uk)

Zarina Mo  
Councillor

07803 125220

[zarina@kessinglandparishcouncil.org.uk](mailto:zarina@kessinglandparishcouncil.org.uk)

Position

Vacant

Position

Vacant

# Kessingland Parish Council

## Committees / Groups / Representatives



Kessingland Parish Council consists of 13 members, including a Chair and Vice-Chair  
The Council has 4 committees which deal with different areas of Council business.

### Planning & Highways Committee

Councillors:  
Chair: C. Carter  
Vice-Chair: I. Graham  
B. Saunders, N. Glendinning, C. Cook,

### Finance & Governance Committee

Councillors:  
Chair: A. Green  
Vice-Chair: I. Graham  
B. Saunders, N. Glendinning,  
J. McLean, C. Cook

### Personnel Committee

Councillors:  
Chair: N. Glendinning  
Vice-Chair: C. Carter  
C. Cook, I. Graham, A. Green

### Leisure & Community Engagement Committee

Councillors:  
Chair: I. Graham  
Vice Chair: J. McLean  
C. Carter, C. Cook, A. Green, L. Hood,  
B. Saunders, D. Boyle

As well as sitting on its 4 Committees, some councillors take on designated responsibilities and others represent Kessingland on outside bodies. These are listed below:

#### Beach Wardens

North – Cllr D. Boyle  
South – Cllr S. James

#### Benacre & Kessingland Flood Group

Cllr S. James

#### Kessingland Events Group

Cllr J. McLean, Cllr C. Cook,  
Cllr D. Boyle

#### Community Garden Co-ordinator

Cllr J. McLean

#### Kessingland Marsh

Cllr D. Boyle (Warden)  
D. Fox (Deputy Warden)

#### Village & Beach Clean-Up Co-ordinator

Cllr D. Boyle

#### Community Fridge

Cllr C. Cook, Cllr J. McLean,  
Cllr L. Hood

#### Hidden Needs Forum

Cllr C. Cook, Cllr J. McLean,  
Cllr C. Carter, Cllr L. Hood

#### Kessingland in Need Trust

Cllr L. Hood

#### Youth Culture Board

Chair & Vice Chair of Council,  
Cllr J. McLean, Cllr I. Graham

#### Kessingland Sports & Social Centre

Cllr C. Cook

#### ESC Community Partnership

Cllr A. Green, Cllr J. McLean,  
Deputy Parish Clerk

#### Suffolk Police

Cllr C. Carter, Cllr L. Hood

#### Suffolk Bus Passenger Interest Group

Cllr A. Green

#### Community Speed Watch & SID Co-ordinator

Position Vacant

#### SALC East Suffolk Forum

Position Vacant

#### SALC Climate Forum

Cllr A. Green, Cllr J. McLean,  
Parish Clerk



## Kessingland Parish Council Staff



### Kessingland Parish Council

**Office Hours:**

Monday – Wednesday & Friday, 10am – 3pm  
Closed on Thursday

**Telephone:**

01502 744367

**Email:**

[admin@kessinglandparishcouncil.org.uk](mailto:admin@kessinglandparishcouncil.org.uk)

**Website:**

[www.kessinglandparishcouncil.co.uk](http://www.kessinglandparishcouncil.co.uk)



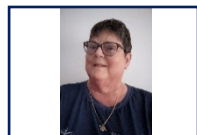
**Parish Clerk & RFO:**  
Neil Coleby



**Acting Parish Clerk & RFO:**  
Shelley Hogg



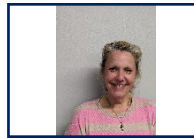
**Admin/Committee Clerk:**  
Debbie Blowers



**Senior Youth Leader:**  
Christine Smith



**Youth Leader:**  
Daniel Fisk



**Youth Leader:**  
Amanda Loud



**Cleansing Operative:**  
Ruth Hill



**Cleansing Operative:**  
Niall McLean

**General Factotum:**  
Position Vacant

## District & County Councillors



**County Councillor:**  
Michael Ladd

Michael has been the Suffolk County Council councillor for Kessingland & Southwold since 2013. He is currently the Chair of the Scrutiny Committee which is part of the arrangements for making sure the Council carries out its responsibilities properly and scrutinises the decisions of the cabinet and committees to ensure that procedure and the law have been properly followed.

Michael's other key role is liaising with his constituents and the parish councils that he represents, helping with matters relating to his role as a county councillor and raising matters with Suffolk County Council. Michael actively attends as many monthly Parish Council meetings as he can, and also takes an active involvement with the parish council's quarterly meetings with Suffolk County Councils Highways Department. Michael also is involved with the East Suffolk Carlton Colville, Kessingland and Southwold Community Partnership.

**Telephone:** 01502 675603  
**Email:** michael.ladd@suffolk.gov.uk

Alan was appointed as the East Suffolk Councillor for Kessingland in the 2023 elections. He is also Chair of the Carlton Colville, Kessingland and Southwold Community Partnership.

Alan's other key role is liaising with his constituents and also Kessingland Parish Council, helping with issues relating to his role as a district councillor, and also representing Kessingland's views at district council level. Alan actively attends Parish Council meetings as well being involved in the Carlton Colville, Kessingland and Southwold Community Partnership.

**Telephone:** 01502 741888 / 07818 563003  
**Email:** alan.green@eastsuffolk.gov.uk



**District Councillor:**  
Alan Green



# Councillor Surgery

with **Councillor Alan Green**

District Councillor for the ward of Kessingland

**Telephone:** 07818 563003

**Email:** [alan.green@eastsoffolk.gov.uk](mailto:alan.green@eastsoffolk.gov.uk)



**Every Saturday  
from 10am until 12pm**

**"Saturday Coffee at St. Ed's"  
Kessingland Church Centre  
Church Road  
Kessingland**

An opportunity for residents of Kessingland to come and chat with me about any concerns or queries they would like my help with.

**ALL WELCOME**



## Church Road Drainage Works



### Church Road Drainage Works Confirmed

Suffolk County Council and Anglian Water have confirmed that the planned works in Church Road will go ahead in the new year.

Anglian Water's contractors Clarets will be on site from 6 January. It is expected to take four – six weeks. There will be temporary traffic lights on Church Road between the Marsh Lane and Green Lane junctions whilst the work takes place. The running lane for traffic will change over the course of the works between south and north side, and for part of this time the bottom section of Green Lane will have to be closed too.

Drainage on Church Road often cannot cope following heavy rainfall and this scheme is expected to increase the capacity of the surface water drainage by connecting two separate drainage systems in Church Road and installing four additional road gullies. It will involve excavating a section of the road between Marsh Lane and just southeast of Green Lane junctions to install the new drainage.

The Parish Council car park on Church Road will be partially closed to the public to be used by the contractors. Some spaces will however remain available for public use when visiting the new café and pets grooming parlour.

This is an Anglian Water led project, if residents have any queries whilst the work is taking place, please email [floodriskteam@anglianwater.co.uk](mailto:floodriskteam@anglianwater.co.uk)

From the Office of Jess Asato, MP



### Jess Asato MP hosts a public meeting to discuss the Terminally Ill Adults (End of Life) Bill

On Friday 15 November, Jess Asato MP, the Member of Parliament for Lowestoft, hosted a public meeting at the Players' Theatre to discuss the Terminally Ill Adults (End of Life) Bill, bringing together local constituents to share their stories, thoughts, and feelings on the Bill. The Private Members Bill, introduced by Kim Leadbeater MP, the Member of Parliament for Spen Valley, will have its Second Reading on Friday the 29<sup>th</sup> November.

Jess Asato organised the public meeting as part of her decision-making process in the run up to the Second Reading and her commitment to listening to the community on issues of conscience.

*"This Bill has sparked considerable debate across the country, and I want to ensure that my constituents have the opportunity to voice their views – and be heard," she said. "This is a deeply personal and ethical matter, and I am committed to hearing from the people of Lowestoft, Beccles, and the villages as we consider the impact of potential legislative changes".*

The event was moderated by Liz Nice, the Editor of the East Anglian Daily Times. Four speakers from across the debate also gave presentations on their positions: Tom Fenning, Pastor of Beccles Baptist Church; Dr Janette Fish, Senior Lecturer at the University of Suffolk and an accredited counsellor specialising in bereavement care; Reverend Dimitri Theulings, Rector of Beccles Parish; and Mark Jarman-Howe, Chief Executive of St Helena Hospice and former board member of the organisation 'Dignity in Dying'. There then followed an audience Q&A session.

*Continued /...*



Jess was deeply moved by the emotive stories shared by constituents throughout the meeting. *“There are a lot of people who have experienced family members in pain at the end of their lives on both sides of the argument and it's a really difficult discussion to have. Talking about death is tough, but I am convinced that we all share the desire to lessen suffering for those at the end of life,”* she said.

“What is important for me to remember is that not everyone is able to come to a public meeting like this or to write to me on an issue. There are vulnerable people, often hidden, who I also need to factor into my thinking and who I need to see protected by any Bill I vote for.”

Though Jess has yet to come to a decision on how she will vote on 29 November, she is nevertheless convinced that the Government needs to take proactive steps to improve the quality of palliative care available across the country. *“Whatever happens with this Bill, what is clear is that we have to invest in palliative care. The fact that so many of our hospices rely on jumble sales and bake sales is absurd – it's awful. Palliative care should be the same as any other part of the NHS. You should be allowed it, and you should be given the very best care. If anything, I hope the debate over this Bill puts a spotlight on getting palliative care right in our country.”*

Jess intends to come to a decision on how she will vote soon and will update constituents when she does so. *“In the spirit of democracy, I remain committed to listening to the views of my constituents across Lowestoft, Beccles, and the villages. I want to profoundly thank those who attended the public meeting, as well as constituents who have written to me about this Bill.”*



## Friends Who Dance Group



Friends Who Dance held a Charity Dance & Raffle on Monday November 4th at KSSC in Francis Road. They raised the amazing sum of money £500.

The chosen charity this year was Prostate Cancer UK. Each year the club holds a Charity Dance in memory of co-founder Les Allen.

With grateful thanks to Asda, Dunelm, Richard Gawthorpe at Europarts, the committee of KSSC and to everyone who donated raffle prizes and to all who attended the event.

Friends Who Dance meet every Monday evening 7.30-10.30pm at KSSC. All welcome.



Kessingland WI has around 36 inspiring Women members. Meetings are held on the 2<sup>nd</sup> Thursday of each month at Kessingland Working Men's club, starting at 7:30pm

On Remembrance Sunday a wreath was laid in memory of those who were killed in the conflicts past and present by our outgoing president Karelyn Smithson and the wreath was made by Pauline Shipley. The committee would like to say thank you to all those who contributed to the wonderful altar decorations in St Edmunds church for Armistice weekend.



At our 14th November meeting we sang Jerusalem. We went through the annual reports from the committee read by Jennifer Jagger, financial report by our treasurer Sandra Warner & Presidents Report by Karelyn Smithson our retiring president. Karelyn Smithson presented the Presidents cup to Margaret Parker for her dedicated service to the WI in Kessingland for over 40 years, both on and off the committee in this time, so thank you to Margaret for her help throughout this time. As this was our annual meeting, we had to elect our new committee and President, the committee was voted en-block and remains unchanged from 2023/2024. Karelyn Smithson announced she had decided to retire as president and Christine Mabb was elected by the members as the president for 2024/2025. The members and committee would like to thank Karelyn Smithson and Jennifer Jagger for their hard work on the committee and president for the last 3 years. We wish them both well for the future.

After the business had concluded we then got crafty and made illuminated bottles which formed the competition for November. Members were all awarded 3 points for taking part. Members were asked to bring their entries to next month's meeting for our Christmas party and to bring a plate and a glass to the meeting as well as food for those who let the committee know they were going to supply food. For the bloom of the month, we had 6 entries, the results were as follows:

First place:	Pauline Shipley
Second place:	Sally Richards
Third place:	Connie Niblett

Members whose birthdays was this month were presented with our very own craft club made birthday cards. Members collated enough donations for 17 shoe boxes and £110 for postage that go to Malawi. Craft Group are making Christmas decorations out of zips. Walking Group is walking to Gisleham ending at Morrisons Café. Lunch Club will be meeting again on 3rd December for Christmas lunch at Chef's Fayre at Marram Green.

Our Next open meeting is our annual meeting on Thursday 12th December, there will be no competition and no bloom of the month. Please bring your decorated illuminated bottles and a plate and glass for the Christmas party. Bloom of the month will resume in the new year.

Kessingland WI would like to wish everyone a merry Christmas and a prosperous new year for 2025

For more information about joining or visiting Kessingland WI, please contact our President, Christine Mabb, on 01502 744255

# Kessingland United Working Men's Club



The Avenue, Kessingland, Lowestoft, Suffolk NR33 7QD  
Telephone No: 01502 740218 / Website: [www.kuwmc.co.uk](http://www.kuwmc.co.uk)  
*Affiliated to the CIU*

The Club is looking forward to Christmas our Decorations are going up next week, they always look great. We have "Just Andy" on Christmas Eve, always a favourite with everyone so why not come along?

Our Quiz night was very successful with 85 people, a fantastic turn out. The date for the next one is 6th February 2025 with a promise of a picture round again. We have also had a request for food which we are looking into for perhaps a later Quiz.

**TICKETS ARE ON SALE FOR NEW YEARS EVE.** We have "KCR", a duo act who are very good. Tickets are selling fast.

## MUSIC FOR DECEMBER

Saturday 7 <sup>th</sup> :	Steve Alan	Tuesday 24 <sup>th</sup> (Christmas Eve): Just Andy
14 <sup>th</sup> :	Rob Charles	Saturday 28 <sup>th</sup> : Me, Myself and I
21 <sup>st</sup> :	Tony Barker	Wednesday 31 <sup>st</sup> (New Years Eve): K C R Duo

Social Evening Bar, Music, Dance and Chat – Sunday January 19<sup>th</sup>, entrance £4.

Country Club "KEVIN BARRY", Sunday January 26<sup>th</sup>, very popular, £7 for everyone.

Our Darts team is still doing very well and is now third in the League with a game in hand and 3 points ahead of Telecom Pigeons and we are about halfway through the season. Come and support them, we also have a pool table to use.

The hall is well used with Parties and other activities:

- Slimming World every Tuesday with two sessions.
- Line dancing lessons on Wednesdays.
- and W.I. every second Thursday in the month.
- Bingo on Monday evenings, Wednesday evenings and Sunday Lunch time - come and join us as more people means bigger prizes.

The club is a lovely venue for parties or other activities with a lounge for smaller groups and for Wakes they are free with a £50 returnable deposit. We have a large well-lit carpark and plenty of disabled parking, plus disabled entrance and toilet facilities.

We have now joined the **ONE LOTTERY**, please support us.

*President: R A Hood*  
*Society Registration No: 4343*

*Secretary: R Gasking*  
*VAT Registration No: 105 2958*



The groups' aims are to identify where we can reduce our contribution to global emissions, and make a difference towards becoming environmentally sustainable, both as individuals and as groups. To find practical ways for the local community to meet the challenges of climate change.

### **Thermal Imaging Project:**

Several members of the group have now completed the Energy Advisor Training including how to interpret Thermal Images. This project to assist residents in insulating their houses and reducing their energy use is being prepared and will go into action over the next month or two.

### **We're on Facebook:**

Get updates and latest information on our Facebook page, just search for: Kessingland Community Climate Action Group

### **Interesting articles you may like to read/watch:**

Reducing the global demand for meat and dairy, especially in high-income countries, is an effective way to lower greenhouse gas emissions and mitigate the rate of global warming. This article describes the journey of how some schools in California started supplying more plant-based meals to their students.

<https://grist.org/food-and-agriculture/california-vegan-school-lunch-plant-based-environmental-climate-grants/>

How the community in a street in London is supplying their own power. Kessingland could do the same!  
**The street in London that's becoming a solar power station**

Can scientists save the world? Can the ingenuity of scientists save the world from the consequences of climate change.

**Panorama - Can Scientists Save the World? - BBC iPlayer**

We wish to be open and accessible to anyone from the community of Kessingland and would love to hear your point of view and ideas.

We meet on the second Saturday of each month at 6.30pm at the Marram Green Centre and all are welcome.

The next meeting is on December 14th. We hope to see you then!







### **Kessingland Primary School Proudly Unveils Friendship Bench with Parish Council Support**

On Thursday 21st November, Kessingland Primary School celebrated a very special occasion with the opening of its new Sid the Snake Friendship Bench, an initiative aimed at fostering kindness and support among pupils. The ceremony was attended by representatives from the local parish council, school staff, and excited Year 6 House Captains, who will now have a dedicated space to sit and make new friends.

The event was marked by speeches from parish council members, who praised the school's commitment to creating a nurturing environment. Miss Egleton, Headteacher, offered prayers of thanks. Mr. Sid James, Chair of the Kessingland Parish Council eagerly cut the ribbon, officially opening the bench to the school family. The day continued with a delightful tea party, where everyone came together to celebrate the success of the project and the power of friendship.

The Friendship Bench is a symbol of the school's ultimate aim: to ensure every child feels included and supported. This collaborative effort between the school and parish council promises to be a lasting positive influence on the children's social development.



*Photographs reproduced with permission*



## Welcome to Kessingland Primary Academy Lottery

This lottery has been set up specifically to raise money  
and make a difference for our children!

It's a fantastic way to bring Parents, Carers, Teachers, and the wider community together, in partnership with our school, and at the same time give something back. We hope to raise funds that can support and enrich the education of our children - we aim to provide extra resources for the children, improve the school environment as well as run extra-curricular activities such as music, art, and sport. Your support is greatly appreciated, and we wish you good luck!



# SUPPORT OUR SCHOOL PLAY OUR LOTTERY

- Tickets cost just £1 a week
- The easy way to help us raise funds
- Local cash prizes every week



**BUY TICKETS:**  
Go to: [www.yourschoollottery.co.uk](http://www.yourschoollottery.co.uk)  
And search for: Kessingland Primary



GambleAware 18



# SUPPORT OUR LOTTERY TODAY

£1 per week

Weekly cash prizes

£25,000 jackpot



## Splitting the £1.00



**How it works...**

It's simple—choose 6 numbers between 0-9 and if they match the weekly lottery draw, you win great prizes. One of our players will win a cash prize every week, maybe even the £25k jackpot! Tickets cost just £1 per week and the proceeds are donated to Kessingland Primary Academy.

Every Saturday at 8pm the numbers are drawn and posted online. Winners are notified by email and winnings paid into the account of your choice.

The easiest way to join our lottery is online at [YourSchoolLottery.co.uk](http://YourSchoolLottery.co.uk) by direct debit or debit card.

**It's so easy to join and will make a real difference to Kessingland Primary Academy**

<p><b>The Maths...</b></p> <p>100 tickets sold a week means</p> <p>= £30 weekly cash prize</p> <p>= £2,080 a year for our school</p>	<p>■ 40p goes to our school</p> <p>■ 36p goes to cash prizes</p> <p>■ 20p goes to admin costs</p> <p>■ 4p goes to VAT</p>
--	---

To start supporting, visit:  
[yourschoollottery.co.uk](http://yourschoollottery.co.uk)  
and search for: Kessingland Primary

GambleAware 18

## Friends of Kessingland Primary Help us to fundraise by becoming a Co-op Member!

We are a small group of parents and teachers, who fundraise for the benefit of all the children who attend Kessingland Church of England Primary Academy. Our aim is to create opportunities for the children which would not be possible without fundraising. We currently only have a couple of outdoor benches and no shelter. The pupils have asked for a quiet outdoor sheltered area where they can eat lunch. We hope this area can be versatile and a multi-purpose area, for learning and fun. Spending time in green spaces or bringing nature into your everyday life can benefit both mental and physical wellbeing so we hope the area will help the whole school community feel more connected to nature.



We seem to be flying towards winter at a mega pace; the ground is covered in the magical colours of autumn (plus the occasional sprinkling of the white stuff), the temperature has dropped, and the library underfloor heating is giving us that sleepy feeling! Our weekly groups are as busy as ever, as you all come in out of the cold, and we are pleased to be able to offer a Warm Space again this year on a Wednesday Morning.

Weather this time of year is your cup of tea or not, the library is a warm and welcoming place to grab your next adventure, meet up with friends or use our free public PCs. It is also home to our community fridge and pet pantry and lots of advice on where to access support this winter.

**Here are some of fantastic services we have available to you:**



If you're struggling to get online, you can get a free SIM card from our libraries which are preloaded with data, calls and texts to help reduce digital exclusion. Find out more here: <https://www.suffolklibraries.co.uk/resources/free-sims-from-the-national-databank>



If you cannot get to the library but would like to borrow books, we can bring them to you! Let us know what genre you like to read and how often you would like your books changed and we will do the rest! We have a fantastic volunteer to deliver the books who is DBS checked.

## Know Your Numbers!

Borrow a blood pressure monitor from Suffolk Libraries to help understand your blood pressure and take action if it's too high



Blood pressure monitors now available to borrow from Suffolk Libraries, just as you would borrow a book!



Are you feeling lonely or isolated? Maybe you've recently moved to the area and are looking for things to do or wondering who can help?

Explore Together is for anyone who is feeling lonely, isolated and looking for social interaction. Anyone interested in receiving the service can fill in a simple self-referral form, or someone can make a referral for them. A volunteer will then be in touch for a chat.



We are hosting a variety of health and wellbeing classes, both in person and online. All events are free! Taking part in regular physical activity not only improves your health - it helps to boost your mood, enhance your mental wellbeing, and it's a great chance to meet new people.

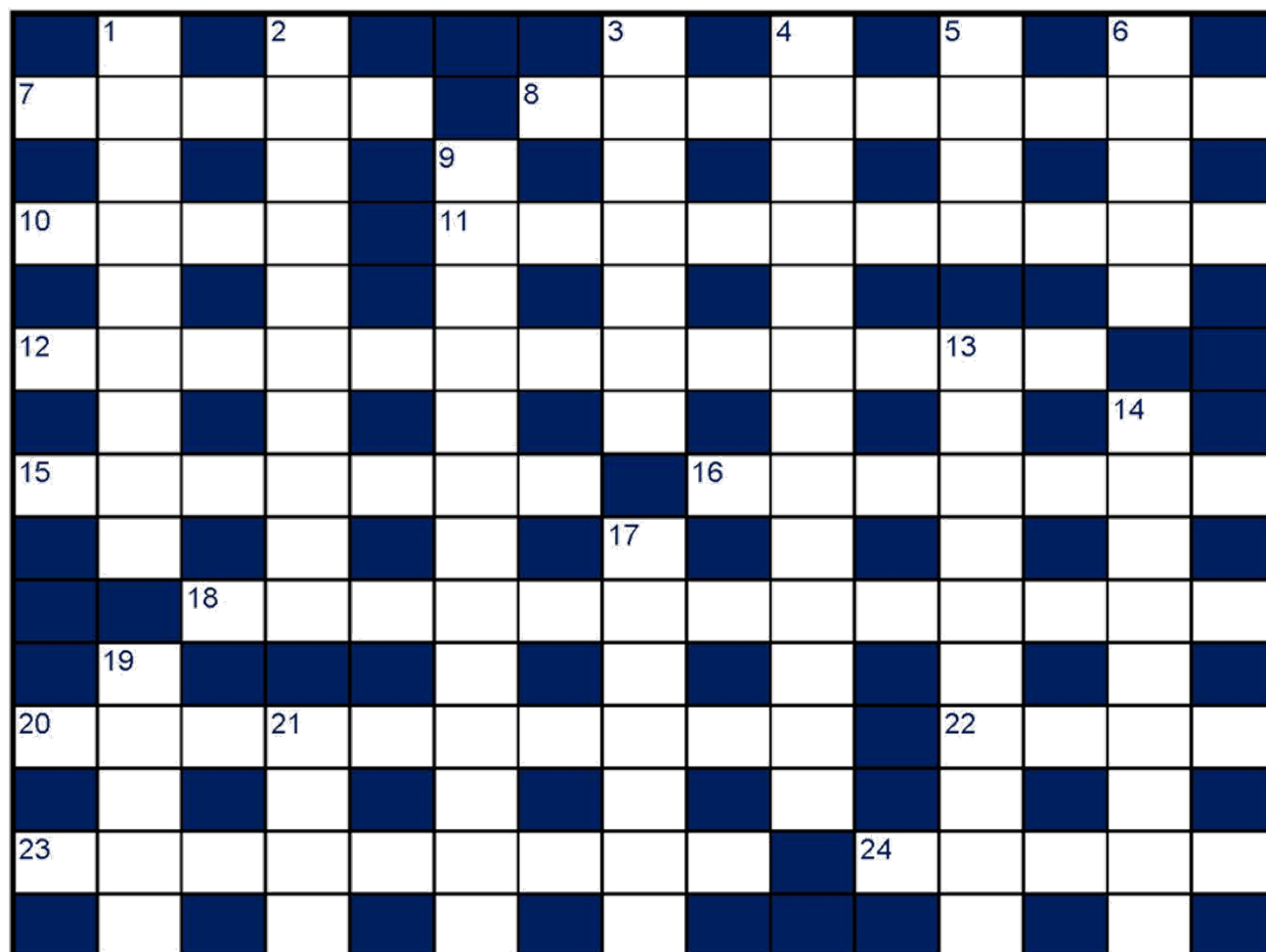
**Anyone can become a library member, it is a free service, all we require is ID with proof of address.**



**We wish a happy Christmas and New Year to our whole community**



No: 101-28



## Across:

- 7 Well turned-out (5)
- 8 Free from all blame (9)
- 10 Rust-susceptible metal (4)
- 11 Major Midlands city (10)
- 12 Liable to mood swings (13)
- 15 Wallpaper remover (7)
- 16 Cause distress to (7)
- 18 Female star of the police series  
*No Offence* (6,7)
- 20 Pastry cook's flattener (7,3)
- 22 Part of the ear (4)
- 23 Away from the main route (3-6)
- 24 Royal Berkshire racecourse (5)

## Down:

- 1 Crisis situation (9)
- 2 Large concert instrument (5,5)
- 3 Drastic, severe (7)
- 4 Having little importance (13)
- 5 Adult tadpole (4)
- 6 Geographical book (5)
- 9 Scottish breed of cattle (8,5)
- 13 About time too! (2,4,4)
- 14 Album filled with cuttings (9)
- 17 Classic TV cat owned by Emily (7)
- 19 Nice and snug (5)
- 21 Canal feature (4)



## Help & Support in the Community



**Kessingland  
Parish  
Council**



If you, or someone you know, are worried about the increasing cost of living, please use the contact details below:



For help with Local Welfare Assistance Scheme & Household Support  
[www.suffolk.gov.uk/costofliving](http://www.suffolk.gov.uk/costofliving)  
0345 606 6067



For help with Finances/Food & Essentials/Fuel & Energy/Housing  
[www.eastsuffolk.gov.uk/community/squeeze](http://www.eastsuffolk.gov.uk/community/squeeze)  
0333 016 2000



For general enquiries  
[www.kessinglandparishcouncil.co.uk](http://www.kessinglandparishcouncil.co.uk)  
01502 744367  
[admin@kessinglandparishcouncil.org.uk](mailto:admin@kessinglandparishcouncil.org.uk)

Where you can get information & advice about what help & services are available to you.

Further information will be published in future issues of The Village News

## Drop in at Kessingland

Whatever the problem, we're here for free, impartial and confidential advice



Face to face drop in KESSINGLAND

First Monday every month 10.00am to 12.00pm

Marram Green Kessingland NR33 7AH

Call us on 0808 278 7866 or email us via [caes.org.uk](mailto:caes.org.uk)

**citizens  
advice** East  
Suffolk

Our offices are in :  
Beccles • Felixstowe • Leiston  
• Lowestoft • Woodbridge plus  
outreach centres across the region

## Well Minds East Suffolk

There is a wide range of mental health support available in East Suffolk but sometimes it can be difficult, especially at a time of crisis, to know where to look for this information. East Suffolk Council's new 'Well Minds East Suffolk' booklets contain mental health advice, information, and details of local support services for people of all ages in need of help with their mental health. 10,000 booklets have been produced and are being delivered to community settings across the district, including libraries, community centres and the Council's network of Warm Welcomes. You can also view the booklet at <https://eastsuffolk.co.uk/wellminds>. The booklets were funded by the Community Partnership Board and two local Community Partnership

**SUFFOLK  
LIBRARIES**

## FREE PRIDE AND PERIODS MENSTRUAL PRODUCTS HERE

Take a look at what we have available on our community shelves. No need to apply, no questions asked.



East of  
England  
**COOP**

ROOBY GOOD PERIODS

SUFFOLK  
Community  
Foundation

Kessingland Library, Marram Green, Hall Road, NR33 7AH

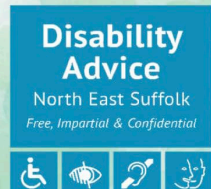
## KESSINGLAND HELP IN NEED TRUST

### CHARITY NUMBER: 242755

The Kessingland Help In Need Trust was initially established in 1965 and its objective is to help those in need within the village. The kind of things we are able to help with are:-

- Essential Household items e.g. cooker, washing machine, fridge, beds etc.
- Appropriate Garden Services and Household/Building Repairs
- Help Towards Funeral Costs
- Help with costs of Hospital Visiting
- Essential clothing, e.g. Children's winter coats
- Veterinary bills
- Signposting to other expert organisations

For further information or for an electronic application form, please contact the Clerk to the Trust at [clerk.khint@hotmail.com](mailto:clerk.khint@hotmail.com).



**Are you missing out on  
the Winter Fuel  
Allowance because your  
not claiming your  
Pension Credit**

**Call us and we can check if you  
are eligible for Pension Credit  
and help you to apply  
Call 01502 511333**

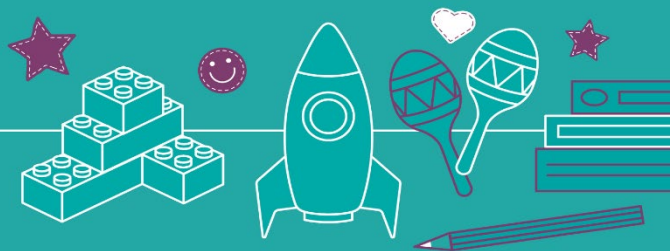
**Disability Advice North East Suffolk  
161 Rotterdam Road, Lowestoft  
Suffolk NR32 2EZ**

**SUFFOLK  
LIBRARIES**

**WHERE  
I BELONG**

## Giving you a Warm Welcome

Free hot drinks and refreshments are available in the library on Wednesday mornings. Come in and warm up!



Take what you need, give what you can at:  
[www.suffolklibraries.co.uk/be-kind](http://www.suffolklibraries.co.uk/be-kind)



By donating to Suffolk Libraries you can help us fund crucial additional services that reduce social, digital and rural isolation in our communities. For details visit [www.suffolklibraries.co.uk/donate](http://www.suffolklibraries.co.uk/donate)

HMIC Charity Number: 2734076



# Christmas Tree Lighting 2024

**Sunday, 8<sup>th</sup> December**  
at 4pm, St Edmund's Crescent

Join us afterwards at the KSSC for  
Mulled Wine  
Mince Pies & Snacks  
Santa's Postbox  
Wipe Hamper Raffle

Music and Carols  
in the Hall  
with  
St Edmund's Church Choir  
and  
Waveney Valley Brass Ensemble

 Kessingland Parish Council

Any donations received will go to  
Kessingland Sports & Social Centre, Registered Charity No. 275441

 KSSC

# Letters to Santa 2024

**Write your letter to Santa**  
Don't forget to include your name & address.  
If you attend Kessingland Primary Academy, please also include your class/year as replies may be delivered to the School.

**You'll find the Post-boxes in**

**Field Lane** (opposite the Surgery)  
1<sup>st</sup> to 7<sup>th</sup> December, 8am-4pm

**Kessingland Library**, Marram Green  
1<sup>st</sup> to 7<sup>th</sup> December  
during Library opening hours  
and

**KSSC**, Francis Road  
8<sup>th</sup> December only  
(after the Tree Lighting)  
4:30pm until 6pm



# Santa's Sweetie Trail

**Sunday 22<sup>nd</sup> or Monday 23<sup>rd</sup> December 2024**

This event is weather dependent so final Trail date will be confirmed nearer the time.  
Updates will be given via community Facebook pages.

**Starting from the KSSC, Francis Road at 4.30pm**



 Kessingland Parish Council

All donations received will go towards equipment and activities for the  
Kessingland Youth Café

 KESSINGLAND YOUTH CAFÉ



# FOLLOW THE STAR



St Edmund's Crib service procession. Those who are able meet us at the memorial garden opposite the Sailor's Home. Our journey starts at 3.30pm ready to walk to the church with a 4 legged friend we hope, and the odd stop along the way... service in church starts at 4pm. Christmas Eve 2024. We have costumes enough for all of you ! Ages 0-99 Everybody welcome, join us

**Sunday December 22nd**  
**3 pm**  
**St Edmunds family carol service**



**We invite you all to join us for a choir led**  
**Service with some of your favourite carols to sing along to**  
**Followed by refreshments in the church**



**Saturday December 7th at 1.30-3.30**  
**The Church Hall**

You are invited to join us as we explore  
Messy Advent Hopes and Fears



Make Angels and Stars to decorate your trees, help create Bethlehem, sing and dress up as a Nativity Character.

Enjoy a jacket potato, beans, cheese and surprise pudding.

Celebrate that God Loves You.



**Messy Church is a Family Church**

**We invite you and your family**  
**if you have a strong faith, a little faith or**  
**have no faith but are curious**

RSVP: [janetmpallister40@gmail.com](mailto:janetmpallister40@gmail.com)

**1ST KESSINGLAND  
BROWNIES AND GUIDES**

# Christmas Bazaar

**THURSDAY 12TH DECEMBER**  
**6PM - 8PM**

**ST EDMUNDS CHURCH HALL  
CHURCH ROAD  
KESSINGLAND**



## Community Noticeboard

Events, Competitions & Local Groups



East Suffolk  
Community  
Partnerships  
*Bringing ideas to life*

Carlton Colville  
Kessingland  
Southwold  
& villages



## Community Partnership Event WAYS TO WELLBEING



Wednesday 11 December, 6pm - 8pm



@Inc, Station Yard, Blyth Rd, Southwold IP18 6FH

We'll be looking at how we can support our communities to stay well this winter, physically and mentally.

Open to local organisations, community groups, parish and town councils.



For more information please email  
[gemma.fraser@eastsuffolk.gov.uk](mailto:gemma.fraser@eastsuffolk.gov.uk)



## KESSINGLAND MEN'S SHED



## Repair Shop

**FIRST WEDNESDAY  
OF THE MONTH**

**9am - 1pm**

**WE CAN REPAIR A RANGE OF ITEMS INCLUDING:**

\_\_\_\_\_ Radios & Clocks \_\_\_\_\_

\_\_\_\_\_ Shear & Knife Sharpening \_\_\_\_\_

\_\_\_\_\_ Gardening Tools \_\_\_\_\_

Community Engagement Project



**Scouts**

1st Carlton Colville Air Scout Group

Email: [join1stcarltoncolville@hotmail.com](mailto:join1stcarltoncolville@hotmail.com)



**We have spaces in all sections ages 6-14 years old**

**For more details visit:**

**<https://www.carltonairscouts.com/>**



## Community Noticeboard

Activities & Groups: Kessingland United Working Men's Club



**Kessingland United Working Men's Club**

The Avenue, Kessingland, Lowestoft, Suffolk NR33 7QD Telephone No: 01502 740218  
Email: clubsecretarykuwmc@outlook.com Website: www.kuwmc.co.uk

**Warm & Welcoming – Membership required.**  
Temporary membership – Holidaymakers welcome only £1 per week

**Hall Bar**  
(small entry fee for all music nights)  
Live music every Saturday night  
Country Music / Club Music nights  
Large dance floor

**Main Bar**  
2 Dart Boards  
Pool Table  
Fruit Machines  
Cheaper drink prices  
Disabled access / toilets  
Pigeon Club  
Bowls Club  
Summer & Winter League Darts team

**Bingo:**  
Monday Evening Doors open 7pm  
Wednesday Evening Doors open 7pm  
Sunday Afternoon Doors open 12 noon

Quiet Lounge Area  
TV  
Clubs using the facility  
Slimming World  
Kessingland WI

Venue Hire – Weddings / Parties / Groups & Clubs.  
Wakes are free (refundable deposit required)  
Large free car park with disabled spaces

Affiliated to the CIU  
Society Registration No: 4343 VAT Registration Number: 105 2958

# LINE DANCING

**NEW LINE DANCING CLASS STARTING WEEK  
COMMENCING 21ST AUGUST 2024**

ALL WELCOME  
PARKING & BAR

WITH  
**ALISON**  
**WEDNESDAYS**  
**7PM TILL 9.30PM**  
**FROM 21<sup>ST</sup> AUGUST**

£5 ENTRANCE

**WORKING MANS CLUB, KESSINGLAND**  
**FOR MORE INFO CONTACT ALISON**  
**TEL: 07901871133**

Trained Teacher

# yes you can

with  
**Slimming  
World**

**Kessingland**  
Kessingland  
Working Mens Club  
Tuesdays  
5.30pm & 7pm

**With Louise**  
**07725748421**

slimmingworld.co.uk

**KESSINGLAND UNITED WORKING  
MENS CLUB**

## New Years Eve Party

Rockin' The Decades  
With  
**K C R**

2024 Ticket prices

Members £12 Seated	
Guests with Members £18 Seated	
Members £5.00 Standing	
Guests with Members £10 Standing	
Non Members £20.00 Seated	
Non Members £12.00 Standing	
Children over 5yrs £8.00	
Bring your own nibbles	

The Avenue Kessingland  
Lowestoft Suffolk  
NR33 7QD  
email : clubsecretarykuwmc@outlook.com

Ticket only  
Tel no 01502 740218



## Community Noticeboard

Activities & Groups: Kessingland Methodist Church



### Saturday, 14<sup>th</sup> December 2024

Join us for Christmas Carols:

9:30am - Outside Longshore Surgery, Field Lane

11:15am – Manor Farm Care Home, Church Road

2:30pm – Kessingland Methodist Church  
for Christmas songs old and new  
Mince Pies and Refreshments  
with Karen and Kayleigh



### COFFEE MORNING

Every Tuesday  
10am – 12pm

### ALL WELCOME

Come along for a cuppa, bacon roll and a chat



### “Beauty and the Beast”

Friday, 31<sup>st</sup> January 2025, 7pm

Saturday, 1<sup>st</sup> February 2025, 2:30pm & 7pm

performed by The Kessingland Players  
at the KSSC, Francis Road

### SUNDAY SERVICES at 10:30am

1<sup>st</sup> December: 1<sup>st</sup> week of Advent

- Led by Rev'd Pam Bayliss, with the blessing of the Posada

8<sup>th</sup> December:

- Leader TBC

15<sup>th</sup> December:

- Leader TBC

22<sup>nd</sup> December: Carol & Christingle Service

- Led by Rev'd Pam Bayliss

Christmas Eve: Candlelight Service

- at 11:30am with Liz & Michelle

Christmas Day:

- at 9:30am with Rev'd Pam Bayliss

29<sup>th</sup> December:

- Leader TBC



# Community Noticeboard

Activities & Groups: Kessingland Library & Marram Green



**SUFFOLK LIBRARIES** **WHERE I BELONG**

## Library Opening Times

MONDAY	Closed
TUESDAY	10am – 4pm
WEDNESDAY	10am – 4pm
THURSDAY	Closed
FRIDAY	10am – 4pm
SATURDAY	10am – 3pm
SUNDAY	10am – 3pm

Take a look at our website for up to date info on all our event and activities.  
Find us at: Marram Green, Hall Road, NR33 7NY  
[suffolklibraries.co.uk/kessinglandlibrary](http://suffolklibraries.co.uk/kessinglandlibrary)

By donating to Suffolk Libraries you can help us fund crucial additional services that reduce social, digital and rural isolation in our communities. For details visit [www.suffolklibraries.co.uk/donate](http://www.suffolklibraries.co.uk/donate)

**SUFFOLK LIBRARIES** **WHERE I BELONG**

## Regular Library Activities

TUESDAY	10am - Baby Bounce
WEDNESDAY	10:30am-12pm - Stay & Play
WEDNESDAY	2pm - Bingo (Waiting List)
FRIDAY	10am - Baby Bounce
FRIDAY	2pm - BYO craft club
FRIDAY	2:30pm - Scrabble
SATURDAY	10:30-12 - Children's Craft
SUNDAY	10:30-12 - Children's Craft

Find us at: Marram Green, Hall Road, NR33 7NY  
[suffolklibraries.co.uk/kessinglandlibrary](http://suffolklibraries.co.uk/kessinglandlibrary)

By donating to Suffolk Libraries you can help us fund crucial additional services that reduce social, digital and rural isolation in our communities. For details visit [www.suffolklibraries.co.uk/donate](http://www.suffolklibraries.co.uk/donate)

**SUFFOLK LIBRARIES** **WHERE I BELONG**

## BABY BOUNCE & TOT ROCK

*Christmas Bounce*  
19th December

Join us for Christmas Bounce at 10am. The session will feature a visit from Santa with a gift for each child.

Limited to 30 spaces so book now so you don't miss out!  
£2 per child - Payment due by 10th December

If you would like to bring older siblings along please book an additional space for them

**BBC RADIO SUFFOLK** **SUFFOLK LIBRARIES**

## Be kind to a kid this Christmas

Please support our appeal by donating new toys to your local library and we'll get them to children who need them.

For more information, visit:  
[suffolklibraries.co.uk/toy-appeal](http://suffolklibraries.co.uk/toy-appeal)

**SUFFOLK LIBRARIES**

## FOR STITCH DROPPERS

Craft Club  
2pm Friday

at Kessingland Library  
£1.00 including refreshments

**SUFFOLK LIBRARIES**

**SUFFOLK LIBRARIES** **WHERE I BELONG**

## CHILDREN'S CRAFT

Saturdays & Sundays 10:30-12:00

FUELLED BY IMAGINATION

By donating to Suffolk Libraries you can help us fund crucial additional services that reduce social, digital and rural isolation in our communities. For details visit [www.suffolklibraries.co.uk/donate](http://www.suffolklibraries.co.uk/donate)

**FOLK** **50 Club**

**JOIN OUR FOLK:**

THE FRIENDS OF KESSINGLAND LIBRARY INVITE YOU TO JOIN THE 50 CLUB.

TO RAISE FUNDS TO SUPPORT OUR VILLAGE LIBRARY.

Bi-monthly draw with 3 prizes of 25%, 15% and 10% for first, second and third places respectively

## Other Groups at Marram Green:

**Tuesdays:**

- Yoga with Aleyana (Spinnaker Room) 1:30pm – 2:30pm

**Wednesdays:**

- Kessingland Art Group (Spinnaker Room) 1pm – 3pm

**Thursdays:**

- Yoga with Aleyana (Spinnaker Room) 4pm – 5pm

**Marram Green**  
coffee and friends events  
Supported by Kessingland Parish Council  
Formerly MeetupMonday

**Mates on Monday**  
Marram Green Community Lounge  
Hall Road  
Kessingland  
NR33 7AH

Join us on Mondays (except Bank Holidays) 10.30 am until 12.30pm

Do you feel like the week-end has dragged?  
Are you fed up with your own company?  
Maybe you are new to the area?

You are invited to come along and enjoy a free cuppa, cake or biscuit & a friendly chat.

**COVID SAFETY**  
For everyone's safety, when arriving for the first time, you will be asked to provide contact details.

Bard Coffee Caravan is a registered charity. No. 1187423

## Community Noticeboard

Activities & Groups: Kessingland Sports & Social Centre



### Shotokan Karate Classes

First Two lessons free

**Kessingland Sports & Social Centre**  
Francis Rd, Kessingland

Friday's 6 -7:30pm  
Starting 2nd Feb 2024

**Sensei Mark Owers**  
3rd Dan BSA Instructor

Family Class  
Age 7+

Email: kesskarate@hotmail.com

### DO YOU LIKE TO DANCE?

COME AND JOIN OUR GROUP **DANCING FRIENDS**

EVERY MONDAY EVENING  
7.30pm  
KESSINGLAND SPORTS & SOCIAL CENTRE  
FRANCIS ROAD, KESSINGLAND, NR33 7PU

ALL TYPES OF DANCES, INCLUDING JIVE, ROCK 'N' ROLL, MODERN DANCE, LINE DANCING etc  
IF YOU JUST ENJOY DANCING COME ALONG AND JOIN IN A FUN EVENING

ENTRANCE: £5.00 per person  
FOR MORE INFORMATION, RING: SUE DYER 07731 380691

## Kessingland

### Friendship Club

The Kessingland Friendship Club meets at the KSSC on alternate Thursdays from 2.00pm until 4.00pm

Come and join in with us and make new friends, enjoy a cup of tea and a biscuit in convivial surroundings, join in the bingo and try and win the raffle!

The Friendship Club also organises and runs outings, social events and long weekend breaks for members and friends, so don't be left out – come along to one of our meetings and join in!

For more information, please contact  
Helen Sinfield on 01502 741424

### Welcome!

## KESSINGLAND

### Short Mat Bowls CLUB

WE MEET EVERY TUESDAY & FRIDAY AFTERNOONS 1.45 PM FOR START AT 2PM UNTIL 4PM

PAY & PLAY, NO MEMBERSHIP FEE

£3.00 PER SESSION INCLUDING REFRESHMENTS

FIRST TIME? PLAY FOR FREE

FOR FURTHER INFORMATION PLEASE CONTACT:-  
WAYNE THOMPSON ON 07557 030442

WE ARE A FRIENDLY CLUB LOOKING FOR NEW MEMBERS

WE LOOK FORWARD TO SEEING YOU THERE!

KESSINGLAND COMMUNITY CENTRE  
FRANCIS ROAD  
KESSINGLAND

## BOOST FUNDS FOR OUR CAUSE

### JOIN OUR LOTTERY!

- Help us raise money to help keep the KSSC open. Win prizes of up to £25,000!
- Tickets only cost £1 per week
- 50% of all tickets sold from our page go to us!

PLAY NOW:  
SCAN THE QR CODE OR GO TO  
[www.onelottery.co.uk](http://www.onelottery.co.uk)  
AND SEARCH FOR: Kessingland Sports

**one lottery**

## KESSINGLAND YOUTH CAFÉ

### DECEMBER 2024

Wednesday 4<sup>th</sup>: Choice of Activities

Wednesday 18<sup>th</sup>: *Hot Dog!* Choice of Activities

**6:30pm to 8:30pm**

**Age Group: 10 to 16yrs**

**FREE ACTIVITIES** at the KSSC Francis Road Kessingland

**SNACK SHOP**

## Other Groups at the KSSC:

### Tuesdays:

- Waveney Table Tennis  
10am – 12pm
- Short Mat Bowls  
2pm – 4pm
- Badminton  
7pm – 9pm

### Wednesdays:

- Knit and Natter  
9:45am – 11:45am
- Youth Café (1<sup>st</sup> & 3<sup>rd</sup> Wednesdays)  
6:45pm – 9pm

### Thursdays:

- Chair-based Exercise  
9:30am – 10:30am
- Pilates  
6pm – 7pm
- Model Flying Club  
7:30pm – 10pm

### Fridays:

- Shotokan Karate  
6pm – 7:30pm

**For Bookings:** Telephone: 07729 384705 / Email: [ksscbooking@hotmail.com](mailto:ksscbooking@hotmail.com)

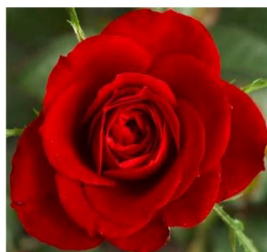


# Community Noticeboard

Activities & Groups: St Edmund's Church & Church Centre



## Kessingland Gardeners Club



### Programme 2024

January 8<sup>th</sup> AGM followed by an illustrated talk by **Tony Brown**  
 February 12<sup>th</sup> Not just slugs & snails that like hostas: **Ken Abel**  
 March 11<sup>th</sup> From field to garden: **Jane Bastow**  
 April 8<sup>th</sup> More about the Exotic Garden: **Andrew Brogen**  
 May 13<sup>th</sup> Tony Brown Entertains  
 June 10<sup>th</sup> Strawberry Fair  
 July 8<sup>th</sup> All about Salvias: **Luci Skinner**  
 August 12<sup>th</sup> Pelargoniums explained: **Ken Abel**  
 September 9<sup>th</sup> An evening visit to the Exotic Garden: **Andrew Brogen**  
 October 14<sup>th</sup> To be Arranged  
 November 11<sup>th</sup> Dahlias and Begonias: **Donny Andrews**  
 December 9<sup>th</sup> Christmas Party

Meeting at  
 Kessingland Church Centre  
 Second Monday Monthly  
 7.30pm

Chairman / Secretary: Tony Brown  
 31 Field Lane, Kessingland NR33 7QA  
[tonybrowneret@gmail.com](mailto:tonybrowneret@gmail.com)

Treasurer: Anne Henwood  
 01502 349068

Committee:  
 Margaret Crisp Ivy Tibbenham Len Allen Sue Lain

Every Saturday 10am—12noon  
 Kessingland Church Centre  
**Saturday Coffee at St Ed's**

CAKES

**COFFEE** is served...  
 SATURDAYS 10-12  
 BOOKS, JIGSAWS, BEIC'A BEAC & CAKE!

FRIENDLY, WARM, SPACIOUS  
 FUN and LAUGHTER  
 QUALITY PRE-LOVED ITEMS  
 LOTS OF EASY PARKING  
 DISABLED ACCESS  
 WONDERFUL WELCOME  
 COME.....

*Craft for Children*

Why not come along and give it a try?

Choir Master: Colin Jobson  
[colinlinda108@icloud.com](mailto:colinlinda108@icloud.com)  
 Or

Come along on a Sunday morning at 10.45am and speak with Colin in person

EVERYONE is welcome at Kessingland Church

We currently have 11 choristers  
 We only have one male chorister and are seeking other male voices in addition to new female choristers

## KESSINGLAND CHURCH CHOIR

*Singing is good for you and FUN*



If you would like to join us  
 (We are VERY Friendly and welcoming)

Kessingland Church Presents

**Small Wonders**

Every Friday  
 at the Church Centre  
 9.30 AM - 11.00 AM  
 Newborn to School-age  
**FREE OF CHARGE**

Arts & Crafts,  
 Singing,  
 Stories, Games

**EVERYONE IS WELCOME**

**'St Edmunds Ladies Group'**  
 Come...Bring a friend.  
 Tuesdays Monthly  
 Kessingland Church Centre  
 2-4pm  
**ALL WELCOME**

ALL ARE WELCOME:  
 2<sup>nd</sup> Tuesday each month

PS...Men are also welcome  
 Speak to Anne 01502 7424654

**ALL are very welcome to this very friendly Group**

Cinema Outings  
**FREE of charge**

Fun & Laughter  
 Tea, cake and friendship  
 Speakers

**Rainbows**  
 Girls play, learn and have tons of fun  
 for ages 4 to 7

At Rainbows, we welcome all girls to play, learn and have fun in a creative, safe space for all abilities.

Join a local Rainbows group [girlguiding.org.uk/joinus](http://girlguiding.org.uk/joinus)

Available to Hire.  
 Contacts Pat Briggs  
 01502 740478

Parking, Disable Access & Toilets,  
 Kitchen and Tables

Meetings, Children's Parties, Events.



## Employment / Volunteering Opportunities



### MAKE A CHANGE BECOME A COUNCILLOR

Could you be a voice for your community?

Do you think that you would represent a different group of people on the Parish Council?

Do you have strong views about what Kessingland Parish Council should be doing?

Do you know what the Parish Council can do?

#### Kessingland Parish Council has a vacancy for a new councillor

If you're over eighteen years of age and live or work within Kessingland (or within three miles of the Kessingland boundary) and do not have any of the disqualifying criteria, then we would like to hear from you! Especially if you are different than the people already on the council. Kessingland is a diverse community, and the council wants to recognise, celebrate, and represent that diversity. The key qualities for a councillor are to keep an open mind and to listen to, learn about, care for and represent your community to the best of your ability.

Applying is easy, there is a short form which you can collect from the parish council or download online. Just complete and either email or drop it off at the council. You'll be invited to attend a Parish Council meeting (generally the second Wednesday each month) and tell the council more about yourself, what you can bring to the council and what you would like to achieve for the community.



If you are interested or want to know more, please speak to one of the current councillors or contact the council office. There is more info as well as information on a range of different local councillors nationally at:  
<https://www.nalc.gov.uk/our-work/local-elections/what-do-local-councils-and-councillors-do>



Kessingland Parish Council, First Floor, Marram Green, Hall Road, Kessingland NR33 7AH  
Telephone: 01502 744367, Email: [admin@kessinglandparishcouncil.org.uk](mailto:admin@kessinglandparishcouncil.org.uk), Web: [www.kessinglandparishcouncil.co.uk](http://www.kessinglandparishcouncil.co.uk)



### Kessingland Village Volunteers



Village  
Recorder

Community  
Gardener

Youth Club  
Volunteer

Warm  
Rooms  
Host

Skills  
Sharer

Tree  
Warden

Could you become a Village Volunteer and help make Kessingland a better place to live?

You don't have to have hours to give, just an interest or enthusiasm for Kessingland and how the community can come together and build a great community spirit.

The community has volunteering opportunities coming up which are shown around this box. Some may actually excite you to be involved. If any of them interest you and you would like to know more, then visit the new parish website:

[www.kessinglandparishcouncil.co.uk](http://www.kessinglandparishcouncil.co.uk)  
email:  
[admin@kessinglandparishcouncil.org.uk](mailto:admin@kessinglandparishcouncil.org.uk)  
call  
01502 744367  
or pop into the council office

Marsh  
Mate

Litter  
Picker

Climate  
Carer

Accessibility  
Auditor

Community  
Fridge  
Champion

Village News  
Columnist



THE WAY TO GO



Supported by  
Active Travel England

### Volunteers needed to support our walking and cycling groups

Could you give a couple of hours two or three times a month to support our active travel social prescribing pilot project?

We're running free one-hour cycling and walking groups for residents in Ipswich and Lowestoft and need volunteers to help.



Interested in finding out more?

Email [thewaytosuffolk@suffolk.gov.uk](mailto:thewaytosuffolk@suffolk.gov.uk) or call 01473 260060



**JOIN SUFFOLK AS AN  
ON-CALL FIREFIGHTER!**

 **Protect YOUR  
community**

 **Teach others**

 **Become a role  
model**

 **Take pride in your  
work & get paid**

 **Find out more & apply**  
**suffolk-firefighters.co.uk**



**SWIFT TO SERVE**



### COMPANY SECRETARY/SITE MANAGER SEAVIEW DEVELOPMENTS (MAINTENANCE) LTD

Seaview Holiday Park at Kessingland is currently recruiting for a Company Secretary / Site Manager. The vacancy has arisen due to the planned retirement of our present Secretary / Site Manager in early 2025. This unique position is based at the chalet complex adjacent to the beach at Kessingland. The site comprises 120 privately owned chalets which are managed by a Committee of volunteer Directors. The successful applicant will report directly to the Committee.

This is a part-time position based in the self-contained site office with adjacent allocated parking space. The role will require approximately 15 hours per week input. The role may suit an energetic semi-retired person or somebody with family responsibilities but is open to all ages.

The successful candidate will have the following attributes and experience:

- Good standard of written English and familiarity with computing software including spreadsheets and document management and creation, including mail merge.
- Self-motivated and able to work alone.
- Ability to manage in a firm but non adversarial manner.
- Good oral and written communication skills.

Salary and holiday entitlement to be agreed, dependent upon hours and previous experience.

**If you wish to apply for this position, please send full CV:**

By Post to: Seaview Developments (Maintenance) Ltd, Seaview Holiday Park, Green Lane, Kessingland, Suffolk NR33 7RG.

By Email to: [seaviewdevelopments@live.co.uk](mailto:seaviewdevelopments@live.co.uk)

**No Agencies please, thank you.**





### KESSINGLAND YOUTH CAFÉ

Our Youth Café is looking for Volunteers to help us run our club which provides a safe environment for Kessingland's young people

**Volunteers Needed for our YOUTH CAFÉ**

The Café is run on the 1<sup>st</sup> and 3<sup>rd</sup> Wednesdays of each month from 6.30pm until 9.30pm.

Duties include:

- Assist with setting up & running activities.
- Safeguard our young people.
- Be a positive role model.

DBS check & full training given.

For more details & an application form, please contact the Parish Council office:

T: 01502 744367  
E: [admin@kessinglandparishcouncil.org.uk](mailto:admin@kessinglandparishcouncil.org.uk)

### KESSINGLAND Kitchen & Wildlife Garden

## VOLUNTEERS NEEDED !!

Do you have some spare time?  
Want to meet new people & make new friends?  
Do you like nature & want to help make a difference?

Your Community Garden  
Rider Haggard Lane, Kessingland

## NEEDS YOU

Volunteers meet every Tuesday from 9am  
We look forward to seeing you

### Pakefield Coastwatch

Can you spare 3-4 hours per week?

## VOLUNTEERS NEEDED

to assist us in safeguarding our seas and coast.

Full training given.

Contact our Station Manager on  
**07788 377501**

Pakefield Coastwatch is a registered charity. No. 1178259

### Love Live Community Litter Pickers

## VOLUNTEERS WANTED

Are you fed up with seeing litter all over the place?  
Fed up with seeing overgrown paths & alleyways?  
Street signs that are so dirty they are difficult to read?

If so, would you be prepared to give up an hour or two each week, on a day to suit you or as part of our organised group on a Monday & Friday morning, to make this village a better place to live and visit. All equipment will be provided.

For more information, please contact the Council office:

Telephone: 01502 744367  
Email: [admin@kessinglandparishcouncil.org.uk](mailto:admin@kessinglandparishcouncil.org.uk)

**Kessingland Parish Council**  
Parish Council Office, First Floor, Marram Green, Hall Road, Kessingland NR33 7PP

Telephone: 01502 744367  
Email: [admin@kessinglandparishcouncil.org.uk](mailto:admin@kessinglandparishcouncil.org.uk)  
Web: [www.kessinglandparishcouncil.co.uk](http://www.kessinglandparishcouncil.co.uk)



## Community Recycling



### CLOTHES BANKS

Kessingland Church Centre  
Carpark  
Church Lane

Livingstones Freehouse  
Carpark  
Whites Lane



### Support Suffolk Libraries: Donate to our fundraising RECYCLING SCHEME

**WE'RE A  
CHARITY**

[suffolklibraries.co.uk/support-us](http://suffolklibraries.co.uk/support-us)

♻️ OLD AND FOREIGN CURRENCY

♻️ MOBILE PHONES

♻️ STAMPS

♻️ TABLETS AND GAMES CONSOLES

### TETRAPAK CARTONS

Lowestoft Recycling Centre  
Haddenham Road  
Lowestoft NR33 7NF

### BOOKS / USED PRINTER CARTRIDGES

Kessingland Library  
Marram Green, Hall Road, Kessingland NR33 7AH

### UNWANTED / USED BATTERIES

Kessingland Co-op  
44-48 Field Lane, Kessingland NR33 7QA

Kessingland Library  
Marram Green, Hall Road, Kessingland NR33 7AH



### GLASS & BOTTLE RECYCLING

Kessingland United Working Men's Club  
The Avenue, Kessingland NR33 7QD

The Sailor's Home  
302 Church Road, Kessingland NR33 7SB



## Useful Contact Information



### Local Telephone Numbers

East Suffolk Council (Customer Services)	0333 0162000
East Suffolk Council (Out of Hours Emergency)	0800 440 2516
East Suffolk Council (Automated Payments)	0300 7900509
Kessingland Parish Council	01502 744367
Jess Asato MP (Lowestoft)	jess.asato.mp@parliament.uk
Citizens Advice Bureau	01502 518510
Disability Advice North East Suffolk (DANES)	01502 511333
Suffolk County Council Highways	0345 6066171
- What's happening in my area?	<a href="http://www.one.network">www.one.network</a>
- Report a fault	<a href="http://www.highwaysreporting.suffolk.gov.uk">www.highwaysreporting.suffolk.gov.uk</a>
- Email	<a href="http://www.suffolk.gov.uk/about/contact-us">www.suffolk.gov.uk/about/contact-us</a>
- Telephone	0345 606 6171
Kessingland Doctors (Longshore Surgery)	01502 740203
Kessingland Pharmacy	01502 740251
James Paget Hospital A and E	01493 452200
NHS Helpline	111
Police - Emergency Only	999
Police - Non-Emergency	101
or online at <a href="http://www.suffolk.police.uk/contact-us/report-something">www.suffolk.police.uk/contact-us/report-something</a>	
Coastline Vets (Carlton Colville)	01502 531999
Three Rivers Vets (Kessingland)	01502 741988
Pakefield Veterinary Clinic	01502 664656
Wangford Veterinary Clinic	01502 578999
Kessingland Library	01502 741212
St Edmund's Church	01502 743154
Kessingland Primary Academy	01502 740223
Kessingland Sports & Social Centre	07729 384705
Kessingland United Working Men's Club	01502 740218
Kessingland Women's Institute	01502 740785

### National Organisations and Helplines

Age Concern	0800 6781602
Childline	0800 1111
NSPCC helpline	0808 800 5000
Cruse Bereavement Support	0808 8081677
Samaritans	116 123
Macmillan Cancer Support	0808 8080000
Mind Infoline	0300 1233393
Alcoholics Anonymous	0800 9177650
Refuge National Domestic Abuse Helpline	0808 2000 247
RSPCA helpline	0300 123499
RSPCA (Mid Norfolk and North Suffolk branch)	0303 040 1565
Action Fraud (Fraud & Cyber Crimes)	0300 123 2040
Suffolk Trading Standards	0808 223 1133

## Crossword Corner - Solutions



The Village News welcomes contributions from everyone within the Parish; news, photographs and reports from village organisations are particularly welcome but contentious issues or articles promoting personal causes should be avoided – the Editor reserves the right not to print items and to edit items submitted for publication.

The views expressed in the Village News, unless stated as such, are not those of the Editor or the council, and no liability can be accepted for any error or omissions although we will publish corrections.



If you would like to submit articles or cover photographs, the deadline for copy is 12 Noon on the 24<sup>th</sup> of each month.

Please send submissions to the Editor –  
jmclean@kessinglandparishcouncil.org.uk  
Articles can be half or full page.

If you would like to advertise in the Village News (Kessingland businesses only), please contact the Parish Council on 01502 744367 for more information and the subscription rates.



Large Village of the Year  
2023



Community of the Year  
2023



### Crossword Solution 101-28

**ACROSS:** 7 Smart 8 Exonerate 10 Iron 11 Birmingham 12 Temperament 15 Scraper  
16 Afflict 18 Joanna Scanlan 20 Rolling pin 22 Lobe 23 Off-course 24 Ascot

**DOWN:** 1 Emergency 2 Grand piano 3 Extreme 4 Insignificant 5 Frog 6 Atlas  
9 Aberdeen Angus 13 At long last 14 Scrapbook 17 Bagpuss 19 Comfy 20 Lock